

Local Market Update – January 2012

A RESEARCH TOOL PROVIDED BY THE COLUMBUS BOARD OF REALTORS®
BASED ON RESIDENTIAL LISTING DATA ONLY

Madison County

January

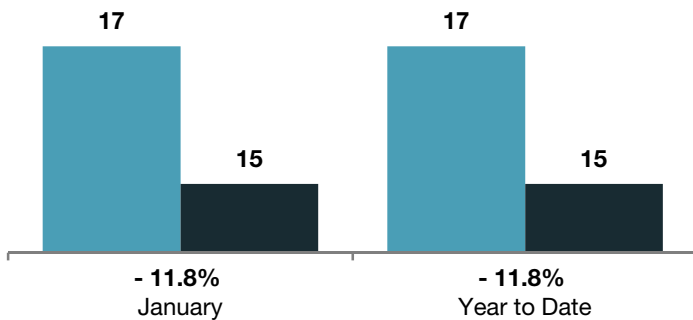
Year to Date

	2011	2012	+ / -	2011	2012	+ / -
Closed Sales	17	15	- 11.8%	17	15	- 11.8%
In Contracts	18	28	+ 55.6%	18	28	+ 55.6%
Average Sales Price*	\$70,240	\$142,903	+ 103.5%	\$70,240	\$142,903	+ 103.5%
Median Sales Price*	\$62,500	\$120,000	+ 92.0%	\$62,500	\$120,000	+ 92.0%
Average Price per Square Foot*	\$50.38	\$77.91	+ 54.6%	\$50.38	\$77.91	+ 54.6%
Percent of Original List Price Received*	79.4%	91.3%	+ 15.1%	79.4%	91.3%	+ 15.1%
Percent of Last List Price Received*	91.3%	95.2%	+ 4.3%	91.3%	95.2%	+ 4.3%
Days on Market Until Sale	82	135	+ 64.4%	82	135	+ 64.4%
New Listings	51	38	- 25.5%	51	38	- 25.5%
Median List Price of New Listings	\$115,900	\$130,650	+ 12.7%	\$115,900	\$130,650	+ 12.7%
Median List Price at Time of Sale	\$65,000	\$110,000	+ 69.2%	\$65,000	\$110,000	+ 69.2%
Inventory of Homes for Sale	284	183	- 35.6%	--	--	--
Months Supply of Inventory	11.6	7.1	- 38.5%	--	--	--

* Does not account for seller concessions. | Activity for one month can sometimes look extreme due to small sample size.

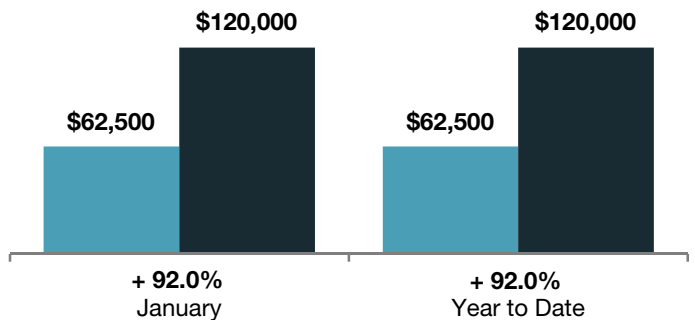
Closed Sales

■ 2011 ■ 2012



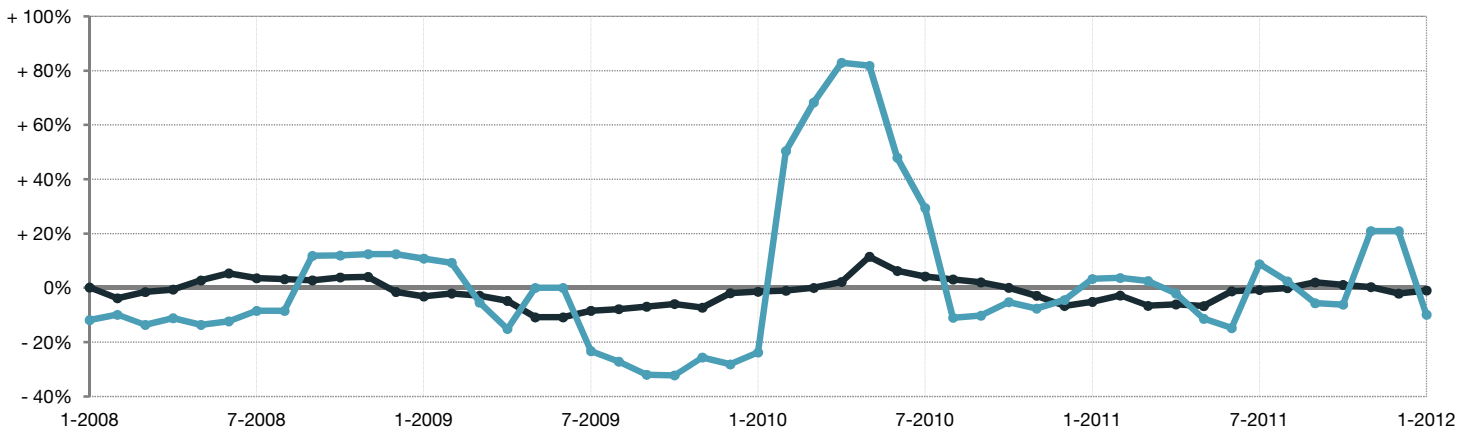
Median Sales Price

■ 2011 ■ 2012



Change in Median Sales Price from Prior Year (6-Month Average)**

All MLS —●—
Madison County —●—



** Each dot represents the change in median sales price from the prior year using a 6-month weighted average. This means that each of the 6 months used in a dot are proportioned according to their share of sales during that period. | All data comes from the Columbus Board of REALTORS® Multiple Listing Service (MLS). | Powered by 10K Research and Marketing. | Page 1 of 2

Local Market Update – January 2012

A RESEARCH TOOL PROVIDED BY THE COLUMBUS BOARD OF REALTORS®
BASED ON RESIDENTIAL LISTING DATA ONLY

Madison County

